



*the Queen's Fund*

**130 YEARS OF WOMEN HELPING  
VICTORIAN WOMEN AND CHILDREN**

*Annual Report 2016-2017*

[www.queensfund.org.au](http://www.queensfund.org.au)

"You do an amazing job, and our service is extremely grateful for the difference you make in our clients' lives."

- December 2016.

**Referring Agency: Melbourne City Mission**

"On behalf of our clients we would like to thank you for your generosity and reassure you your financial assistance will help them immensely. You have made a real and substantial contribution to their well being, and they are very grateful for it."

- November 2016.

**Referring Agency: Port Phillip Community Group**

"I wanted to reiterate how absolutely amazing The Queen's Fund has been to this client and others."

- October 2016.

**In Touch Multi-Cultural Centre Against  
Family Violence**

"As always, thanks so much for this assistance. It makes a real difference in our clients' lives. [The client you assisted] is looking forward to cementing yet another step in her independence, health and connection to the community."

- September 2016.

**Referring Agency: Melbourne City Mission**

# The Queen's Fund in Numbers

**In 2016/17 we assisted the greatest number of women and children to date.**

Homelessness, family violence and mental illness continue to be the primary reasons why women apply to The Queen's Fund for funding and the main reasons why funding is required are household expenses, rent and educational costs.

## NUMBER OF WOMEN AND CHILDREN ASSISTED:



846



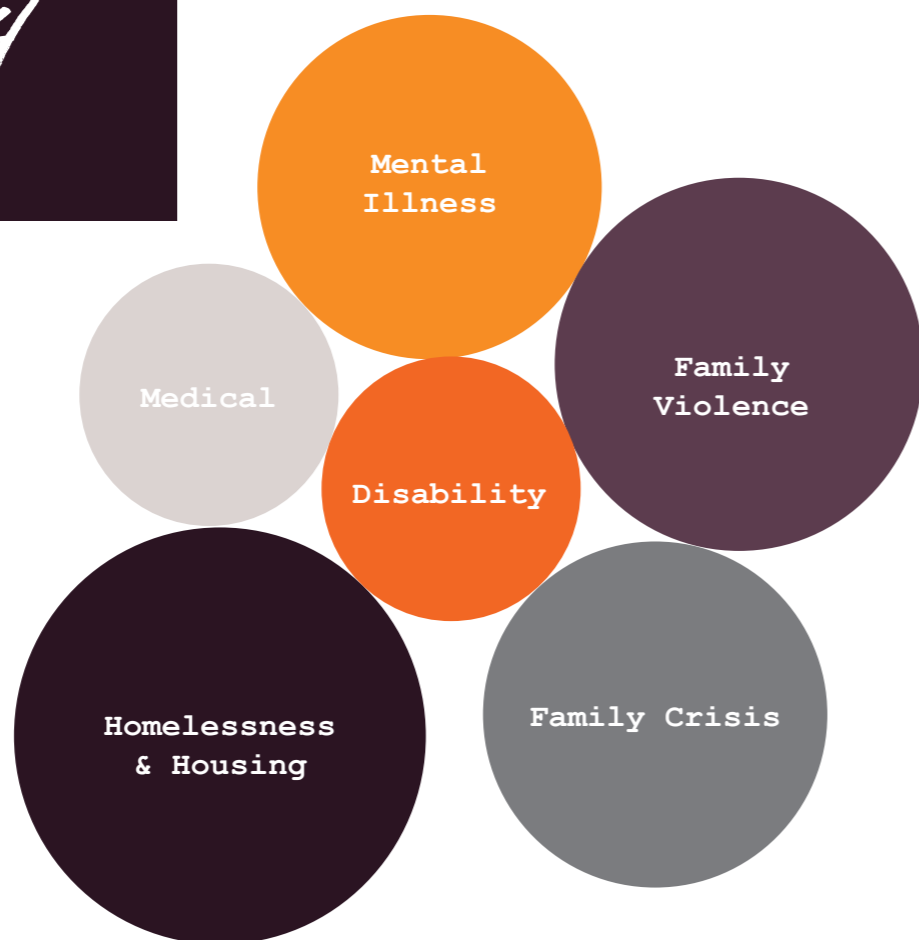
1,194



## THE AVERAGE AGE OF WOMEN WE ASSIST IS

42

## PRIMARY REASON ASSISTANCE REQUIRED:



## TOP 5 REQUESTS FOR ASSISTANCE:

**HOUSEHOLD** \$59,176 to 173 Women

**EDUCATION** \$47,716 to 149 Women

**RENT** \$39,066 to 122 Women

**UTILITIES** \$36,794 to 115 Women

**MEDICAL** \$35,324 to 106 Women

"[The Queen's] Fund provided a 16 year old with specialist dyslexia assessment, lenses and frames. [The client's child] is beginning year 11 this year and these glasses will be of great benefit to him. The client found this assistance of great assistance at a time when she was struggling to support her son to maintain engagement at school. She has since lost her job to redundancy, fortunately your funding assistance covered her son's needs before this major change occurred."

- May 2016.

Referring Agency: Kildonan UnitingCare

**WOMEN WERE REFERRED BY OVER 240 ORGANISATIONS ACROSS VICTORIA**

**OUR EDUCATION FUND ASSISTED OVER 50 WOMEN TO UPSKILL THEMSELVES, AND A FURTHER 90 WOMEN TO SUPPORT THEIR CHILDREN'S EDUCATION**

## TOTAL FUNDS PROVIDED

\$278,431

**EACH MONTH WE REVIEW ON AVERAGE 78 APPLICATIONS**

**This year 45 applications were fast tracked**



# About Us

## OUR VISION

To financially assist and empower single women and children in Victoria who are in distress, crisis or emergency situations.

## OUR MISSION

The Queen's Fund provides financial aid to single women and children in Victoria who are subject to hardship. Grants are allocated to women who are referred by community organisations and welfare agencies.

The Queen's Fund encourages women to increase their self-worth, skills and knowledge through the:

- provision of short-term emergency relief to alleviate immediate financial crises with rent, medical and household expenses;
- allocation of educational grants to increase access to educational opportunities; and
- provision of grants which give women a chance to rebuild their lives and nurture their children.

## ABOUT US

**The Queen's Fund provides emergency funding to Victorian women and children in crisis.**

The assistance we provide can help prevent homelessness, enable a woman to escape family violence, provide education or training for a woman and/or her children, pay essential medical bills or provide crucial breathing space so a woman can get her life back on track.

We work with social workers who are in the best position to determine how to help the woman in need. They continue to support her after our emergency relief has been provided.

Founded in 1887, we are one of Victoria's oldest charities. Our committee is unpaid and we have very low overheads. A historical bequest from a committee member covers our overheads. This means 100% of the money you donate goes to the women and children who need it most.

# President's Report



## **2016/17 has been a year of looking back and looking forward for The Queen's Fund.**

In March, we celebrated 130 years of continuously helping single Victorian women and their children in need and two of our members (Penny Montgomery and Thelma Castles OAM) received recognition for their contribution to the community through The Queen's Fund over the past three decades (see page 20 of this Report).

Looking forward, we upgraded our website to allow online donations and to enable the efficient and secure submission of applications for assistance by our referring agencies.

2016/2017 has seen the greatest number of women and children assisted by The Queen's Fund to date. We assisted 846 women who were in distress, crisis or emergency situations – a 2% increase on last year.

When you read the statistics on the number of single women who are homeless or living below the poverty line in Victoria (as shown in "The Need" on page 11 of this Report) you can see why the demand for The Queen's Fund is at its highest level ever.

We could not have helped this many women and children without the generous support of our donors. As a provider of emergency relief and material aid, we rely on recurrent funding and on our 130th anniversary I would like to especially thank those donors who have supported us year after year, for decades and to the City of Melbourne who has supported us for the full 130 years.

To our new donors who found us through The Age article, we hope you'll continue to support us so The Queen's Fund can continue to do its works for decades to come.

*Sally McLean*

President



# 130 Year Celebration

**In March 2017, The Queen's Fund celebrated 130 years of continuously supporting single Victorian women in distress, crisis or emergency situations through the provision of small financial grants.**

The new website was made possible by a grant from the RACV Community Foundation and the pro bono support of Shine Solutions, March Studio, Clutch Creative, Max Kruse Creative and the Communication Subcommittee.

The Queen's Fund was established in May 1887 by the then Governor of Victoria's wife, Lady Loch, to commemorate Queen Victoria's Golden Jubilee.

This significant milestone has been reached through the dedication and hard work of generations of:

- the volunteer women who make up our Committee;
- our Trustees;
- our pro bono advisers; and
- our generous supporters.

The Queen's Fund has met in rooms in the Melbourne Town Hall every month since the very first meeting of The Queen's Fund in 1887, so it was only fitting that the celebrations for our 130th birthday were also held at the Melbourne Town Hall. We would like to thank the City of Melbourne for generously donating the use of their rooms for such a significant period.

The 130th celebration coincided with the launch of our new website ([www.queensfund.org.au](http://www.queensfund.org.au)). The new website enables us to more easily reach Victorian women and children who are in need through the social workers with whom we work and has the back-end capability to enable social workers to easily and securely apply to us for funding.



# Timeline

<b>1887</b> - Bulli mine disaster - Meeting in Melbourne Town Hall to establish The Queen's Fund - Queen Victoria's Golden Jubilee	<b>1888</b> - Capital of The Queen's Fund was £10,238	<b>1889</b> - The Queen's Fund formally created by trust deed	<b>1900</b> - Old age pension introduced in Victoria
	<b>1901</b> - First donation by The Felton Bequest	<b>1910</b> - National disability pension introduced	<b>1912</b> - National maternity allowance introduced
<b>1914-1918</b> - World War I	<b>1929</b> - First professional almoners in Australia	<b>1939-1945</b> - World War II	<b>1941</b> - National child endowment introduced
<b>1942</b> - Widow's pension introduced	<b>1945</b> - Unemployment, sickness, and special benefits introduced	<b>1959</b> - First donation from the Collier Charitable Fund	<b>1962</b> - The Queen's Fund distributed £1,820
<b>1967</b> - Revenue Account established	<b>1969</b> - First donation from William Angliss Charitable Fund	<b>1970</b> - The Queen's Fund distributed \$5,020	<b>1975</b> - Assisted 100 women
<b>1977</b> - First donation from The R.E. Ross Trust	<b>1980</b> - The Queen's Fund distributed \$16,093	<b>1990</b> - The Queen's Fund distributed \$40,246	<b>1995</b> - Assisted 495 women
<b>1998</b> - Education Fund established	<b>2000</b> - The Queen's Fund distributed \$70,666	<b>2001</b> - For the first time, records were stored electronically through the introduction of an access database	<b>2005</b> - Assisted 513 women
<b>2009</b> - First website established	<b>2010</b> - The Queen's Fund distributed \$115,019	<b>2015</b> - Assisted 812 women	<b>2017</b> - New website launched - The Queen's Fund distributed <b>\$278,431</b> and assisted <b>846</b> women



# The Age Articles

BY MICHAEL SHORT

*"We are all but a few bad decisions  
or some mongrel circumstances away  
from catastrophe."*

Michael Short, Chief Editorial Writer for The Age, has sensitively and powerfully captured the distressing circumstances of many of our clients in two articles about The Queen's Fund written to coincide with our launch.

The Queen's Fund committee applauds the courage of 'Jane' who responded to Michael's first article to tell her story.

The full text of both articles can be found online at <http://www.theage.com.au/comment/by/Michael-Short>

## IMPACT OF ARTICLES

26 March 2017 to 31 May 2017

10 offers to volunteer

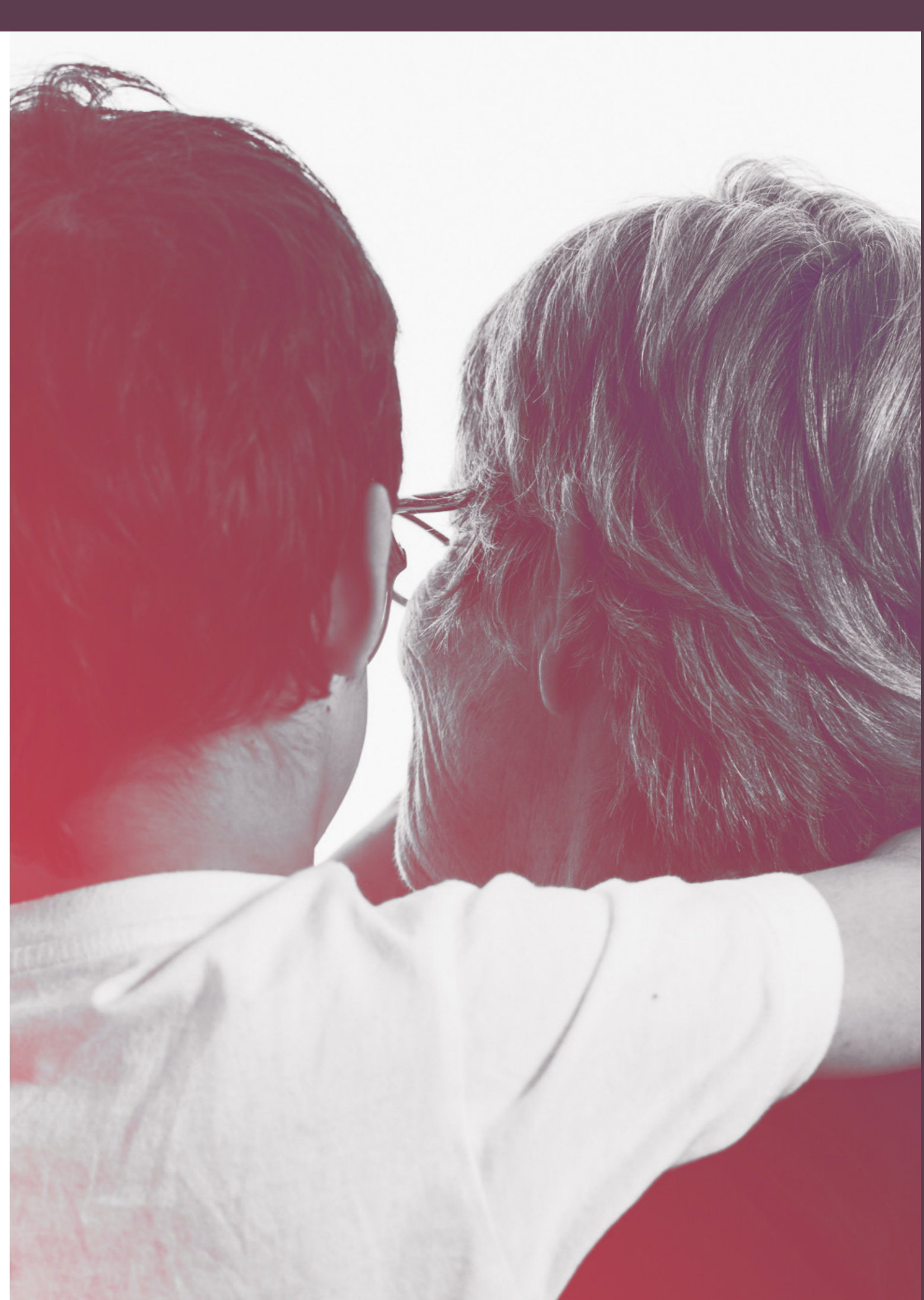
70 new donors

Over \$60,000 donated

Over 800 people reached  
on Facebook

"The Queen's fund has assisted [the client] where other organisations cannot support ...historic [family violence] debt created by moving from the violence. Thank you so much for your support."

- April 2017.



# The Journey, What we do



1.

## THE NEED

Single Victorian woman is in crisis, distress or an emergency situation.



2.

## APPLICATION

Woman meets with social worker (or similarly qualified professional). Social worker applies to The Queen's Fund on behalf of the woman for assistance via online portal. Assistance provided is in the form of:

- Monetary grants for rent, utilities, household items, basic necessities, medical assistance, education for self or child, transport, storage and moving costs
- Telstra bill assistance vouchers.



3.

## ASSESSMENT

Applications are considered through 2 channels:

- Fast track to secure housing or if there is a threat of eviction/disconnection
- Referral meeting – 3rd Monday of every month.



4.

## APPROVAL

Upon approval, grants are sent directly to the nominated third party payee or Referrer via BPAY, EFT, cheques or vouchers. A letter of confirmation is sent to the Referrer.



5.

## RECEIPT OF GRANT

The Referrer meets with the woman to provide confirmation of funding and (if applicable) cheque.



6.

## ACQUITTAL REPORT

Referrer provides The Queen's Fund with an Acquittal Report signed by Referrer and woman to acknowledge assistance provided.

# The Need for The Queen's Fund

**The Queen's Fund supports single women and children in Victoria who are in distress, crisis or emergency situations.**

Single women, particularly those with children, are one of the groups in our society who are most in need of your support. Statistics indicate that:

- nearly three million Australians are living below the poverty line<sup>1</sup>;
- 33.2% of all lone parent households are living below the poverty line<sup>2</sup>;
- women continue to be more likely to live below the poverty line. This outcome is due to women tending to have lower employment rates and lower wages than men and a greater caring role both for children and for other family members<sup>3</sup>;
- there are currently over 180,000 people on social housing wait lists across Australia<sup>4</sup>;
- almost two in three people seeking homelessness support in Victoria are female<sup>5</sup>;
- a mother on single parenting payments looking for a two-bedroom rental in Melbourne has just two out of a hundred properties which she could afford<sup>6</sup>; and
- up to 65% of single parents are going without food in order to ensure that their children have enough<sup>7</sup>.

"It becomes increasingly difficult to access 'special' funding that raises their opportunities above the relentless level of living beneath the poverty line."

- September 2016.

Referring Agency: **EACH**

"This funding source has been invaluable to me in the last 7 years, through 2 roles. It has meant I could assist in so many ways, the common has been paying a lump sum to Office of Housing to clear a debt thus enabling many single women with children to have a fresh start after family breakdowns, private rental pushing them out of the market and a variety of other reasons. The other way I have used it has been directly to assist children where other funding sources have not been able, camps, clothes, school supplies. It's a shame schools can't be more helpful with these things, but I'm really grateful The Queen's Fund has been able to. Thanks, from the bottom of my heart, as a worker I feel I can assist so much more when I know how to bridge a gap with funds."

- May 2016.

Referring Agency: **SalvoConnect**

<sup>1</sup> Australian Council of Social Service, Poverty in Australia, October 2016  
<sup>2</sup> ibid  
<sup>3</sup> ibid  
<sup>4</sup> The Honourable Scott Morrison MP, January 2017

<sup>5</sup> Australian Institute of Health and Welfare Data, <http://www.aihw.gov.au/homelessness/>  
<sup>6</sup> Department of Human Services, Rental Report 2016  
<sup>7</sup> National Council of Single Mothers and their Children, [www.ncsmc.org.au](http://www.ncsmc.org.au), June 2016



# Some of the Referring Agencies we work with



# Referring Agencies

We received applications from over 240 agencies from across Victoria.

## THE 10 AGENCIES THAT MADE THE MOST APPLICATIONS TO THE QUEEN'S FUND WERE:

- Whittlesea Community Connections
- EACH
- MIND Australia
- Launch Housing
- Neami National
- Anglicare
- InTouch Multicultural Centre Against Family Violence
- Kildonan UnitingCare
- St Kilda Gatehouse
- Inner South Community Health

The Queen's Fund has received applications for assistance to women and children during the 2016-2017 financial year from the Melbourne Metropolitan area as well as regional Victoria including Ballarat, Bendigo, Horsham, Healesville, Geelong, Orbost, Shepparton, Traralgon and Wonthaggi.



"Thank you again for your kind support of the single women in the Yarra Valley area. Many of them are still recovering from the horrific bushfires of several years ago and the long standing mental health issues which have resulted for so many people in this area."

- December 2016.  
Referring Agency: EACH



# Our Impact:

## ACCESS TO EDUCATION & TRAINING PATHWAYS

### THE EDUCATION FUND

The Queen's Fund places great emphasis on the importance of education to alleviate long-term, systemic poverty. In 1998, The Queen's Fund set up a separate fund called The Education Fund. The Education Fund aims to assist children to remain in education and allow women to further their education so they can find long-term employment and become financially secure.

For the period 1 May 2016 to 30 April 2017, The Queen's Fund spent \$47,716 assisting 53 women and 96 children in the pursuit of education and training pathways.

### HOW THE QUEEN'S FUND HELPS

- Contribute to the cost of further education or a training course.
- Pay for English classes.
- Pay for Working with Children Checks and Police Checks.
- Pay for school fees, school uniforms and textbooks for children.
- Contribute to the cost of a laptop or iPad where required for school.
- Pay for a child to attend school camp.
- Pay for extra curricular activities for a child.

### CASE STUDY

The client was struggling financially after fleeing a domestic violence situation with her five children aged under 18. The referring agency found the client public housing and prevented disconnection of her utilities through a Utility Relief Grant. The Queen's Fund contributed \$400 towards the cost of school fees so her children could stay at school.

- May 2016.

Referring Agency: Banyule Community Health

### WHAT YOUR MONEY PAYS FOR



**\$300**

**PAYS FOR A REFURBISHED  
COMPUTER OR LAPTOP FROM B2C  
COMPUTERS SO A WOMAN OR  
HER CHILDREN CAN STUDY**

"I would like to sincerely thank you for [the] donation of \$350 to our client. This amount will enable her to pay the remainder of her school fees for this year and to purchase some much needed clothing, shoes and essentials for her children."

- December 2016.

Referring Agency:

Healesville Interchurch Community Care Inc

# Our Impact:

## PREVENTION OF HOMELESSNESS & ENABLING ESCAPE FROM DOMESTIC VIOLENCE

### HOW THE QUEEN'S FUND HELPS

- Pay bond to secure housing.
- Pay a lump sum towards rental arrears to maintain tenancy.
- Pay for storage of possessions when a woman becomes homeless.
- Pay removal costs to enable a woman to escape family violence or access housing.
- Pay for essential household items when a woman finds a new home.

"The \$350 granted to my client has helped pay rental arrears and she has now avoided being sent to VCAT by her landlord. She has since found new private rental and left on better terms with the previous real estate [agent] – a major factor to her being able to move forward into new accommodation. We would like to thank the Queen's Fund for your financial assistance, it has provided my client with the chance to get back on track and better look after herself and her son."

- November 2016.

Referring Agency: St Laurence

### WHAT YOUR MONEY PAYS FOR



**\$200**

**PAYS FOR A BOND  
DEBT SO A WOMAN AND HER  
CHILDREN CAN SECURE OFFICE  
OF HOUSING ACCOMMODATION**

### CASE STUDY

The client escaped a domestic violence situation with her three children. The client receives no financial support from the children's father and is struggling to make ends meet on a Centrelink income. She had fallen behind in her rent and was facing eviction if she did not pay next month's rent. The application was received on 29 May 2016. The Queen's Fund contributed \$350 towards the cost of the client's rent on 30 May 2016, thereby preventing eviction.

- May 2016. Fast Track Application.  
Berry Street, Northern Family & Domestic

# Our Impact:

## ACCESS TO HEALTHCARE & IMPROVED HEALTH

### HOW THE QUEEN'S FUND HELPS

- Pay essential medical bills.
- Pay the cost of essential medical items.
- Pay the cost of car registration or car repairs so a woman or her child can get to medical appointments.
- Pay bills that mount up during extended periods of illness.

"Thank you for accepting my grant for a client that I was working closely with at Werribee Mercy Hospital. The money, which has been channelled into a gym membership and establishing a regular exercise routine for my client with multiple and complex medical comorbidities was very appreciated. [The client], having only received the membership yesterday, has already put it to use."

- March 2017.

Referring Agency: Werribee Mercy Hospital

#### WHAT YOUR MONEY PAYS FOR



**\$150**

**PAYS FOR PRESCRIPTION  
GLASSES AND  
LIFE-SAVING MEDICATION**

#### CASE STUDY

The client is a senior on the aged pension from regional Victoria whose life partner died two years ago. She is battling grief as well as ongoing serious medical conditions. Earlier this year she was diagnosed with breast cancer and is now struggling to pay her medical expenses and the costs of travelling to medical appointments. The referring agency provided her with food vouchers and The Queen's Fund contributed \$330 (the full amount requested) towards the cost of her out of pocket medical imaging and pathology tests.

- June 2016.

Referring Agency: Bass Coast Health

# Our Impact:

## ENABLING A WOMAN IN CRISIS TO GET BACK ON TRACK

### HOW THE QUEEN'S FUND HELPS

- Pay essential utility bills to prevent disconnection.
- Pay to repair or replace vital household items.
- Reduce a debt to give a woman in crisis breathing space.

"I would like to thank the Queen's Fund on behalf of my client. [She] has lived for years without running water in her kitchen. From the moment she engaged with Wellways and myself, I wanted to get this issue fixed for her. Unfortunately Wellways do not have enough funding for these kinds of projects and I am so lucky to have found such a generous organisation in yourselves. [The client] has saved up some of her own money and will contribute to the plumber fee and your contribution of \$300 will help her pay this in full."

- February 2017.

Referring Agency: Wellways

#### WHAT YOUR MONEY PAYS FOR



**\$350**

**CONTRIBUTES TO THE  
PURCHASE OR REPAIR OF  
ESSENTIAL HOUSEHOLD  
APPLIANCES**

#### CASE STUDY

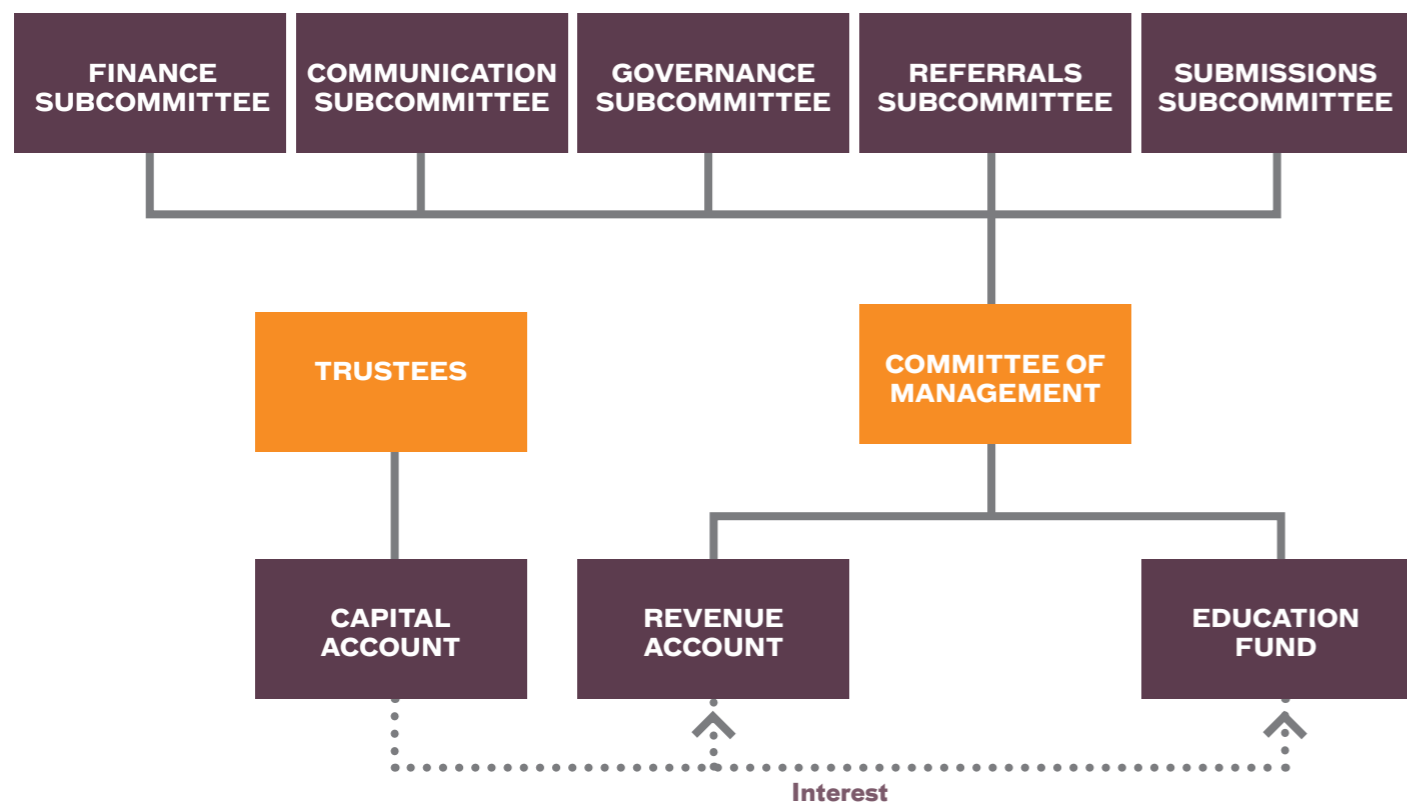
The client is a single mother of 2 children and is wheelchair bound. She is a victim of past family violence including severe physical and sexual abuse. Her ex-husband is incarcerated as a result of the crimes he committed against her. The client has been working hard to get her life back on track. She is attending university and has changed the title of her home into her own name and is working hard to repay the mortgage and the many debts incurred by her husband. The Queen's Fund paid the requested \$268 towards her outstanding council rates.

- November 2016.

Referring Agency: Anglicare Victoria



# Our Structure



# Our People

## PATRON

The Governor of Victoria  
The Honourable Linda Dessau AC

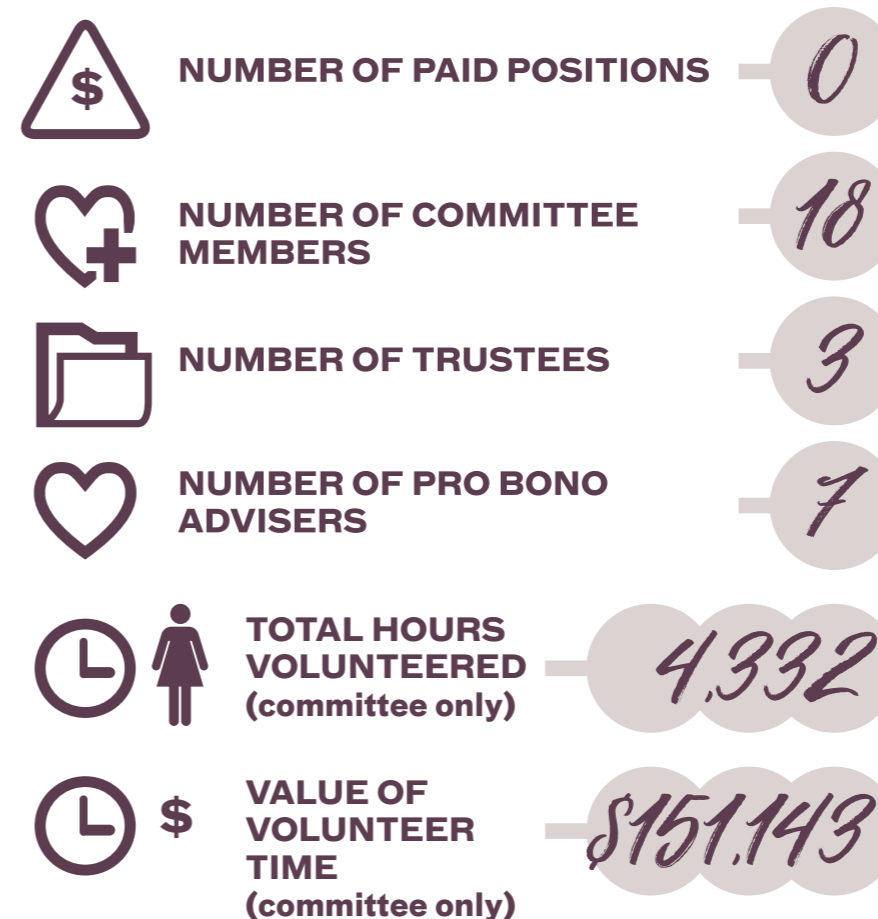
## TRUSTEES

Jay Bonnington  
Gail Owen OAM  
Andrew Robson

## COMMITTEE MEMBERS

Margaret Allen (Secretary)  
Katie Bayley  
Sophie Benardeau-Short (Deputy President)  
Fiona Best  
Thelma Castles OAM  
Anne-Laure Cavigneaux  
Lee Ann Connor  
Andrea King (Deputy Treasurer)  
Judith Lawler  
Sally McInnes  
Jane McLaughlin (Treasurer)  
Sally McLean (President)  
Penny Montgomery  
Helen Moylan  
Sally Scrivener  
Glenys Severin  
Helana Wretham  
Lili Zhao

## VOLUNTEER NUMBERS



Projected hourly wage rates for volunteers, 2016. 'Key Facts and Statistics About Volunteering in Victoria', Volunteering Victoria Information Sheet, 3 August 2016.

# Awards



**PENNY MONTGOMERY**  
(Committee member since 1983)

Penny Montgomery was Highly Commended in the category of Service in the 2016 Victorian Premier's Volunteer Champions Awards. The Victorian Premier's Volunteer Champions Awards acknowledge and celebrate the extraordinary contributions of all volunteers in Victoria.



**THELMA CASTLES**  
(Committee member since 1998)

Thelma Castles was awarded a Medal of the Order of Australia in the General Division for service to the community through charitable organisations in the Australia Day Honours on 26 January 2017.



"The level of professionalism you demonstrate can be hard to achieve in any organisation let alone one run voluntarily so we here highly commend all your efforts and the time that obviously goes into running such an entity."

- December 2016.

Referring Agency: Melbourne City Mission

# Financial Summary

	Note	2017	2016
Donations - Capital Account	1	\$126,942	\$118,250
Donations - Revenue Account	2	\$210,808	\$204,455
Interest & Dividends		\$73,866	\$66,388
<b>Total Income Available for Grants</b>		<b>\$284,674</b>	<b>\$270,843</b>
Amount Granted	2	\$274,281	\$233,975
Other Expenses	3	\$13,059	\$5,260
<b>Net Surplus</b>		<b>\$124,276</b>	<b>\$149,858</b>

Note 1 - Donations to the Capital Account are unavailable for grants.

Note 2 - Does not include value obtained from non-cash partnerships.

Note 3 - All expenses in 2017 covered by Estate of Violet Tivey and RACV Community Foundation.

## ACCUMULATED FUNDS

### The Queen's Fund and Trustees for The Queen's Fund

	Note	2017	2016
<b>Net Assets</b>		<b>\$1,652,691</b>	<b>\$1,483,603</b>

The Queen's Fund complies with all applicable Australian Accounting Standards and Guidelines. These financial statements are audited by Accru Melbourne (Audit) Pty Ltd. Complete financials can be viewed at [www.queensfund.org.au](http://www.queensfund.org.au)



# Our Donors

We would like to thank all our supporters throughout 2016/2017 (donations made before 30 April 2017). All the work that The Queen's Fund has achieved could not have been done without the generous support of the following:

## TRUSTS AND FOUNDATIONS

Bardas Foundation  
 Collier Charitable Fund  
 Estate of Marian and E.H. Flack  
 Estate of J Harris  
 Estate of Violet Tivey  
 H G Turner Estate  
 Hugh D.T. Williamson Foundation  
 Jack Brockhoff Foundation  
 John Russell MacPherson Fund  
 Lord Mayor's Charitable Foundation  
 Loughrigg Pty Ltd  
 Pierce Armstrong Trust  
 PSA Insurance  
 RACV Community Foundation  
 R E Ross Trust  
 Southport Uniting Church  
 Stanley Heath Fund  
 The Barnes Bequest  
 The Miller Foundation  
 Victoria Golf Club Women's Committee  
 William Angliss Charitable Fund

## INDIVIDUALS

J Alcantara	A Archibald
A Barry	P Bellamy
A Borschmann	C Boyd
J Brennan	V Briggs
R Castles	T Castles
A Cavigneaux	H Dale
M Devlin	L Draper
A Drysdale	J Ellis
D Gibb	B Haigh
S Hall	I Hardie
S Harkin	R Harlock
V Harpwood	A Hood
B Kahanoff	A Kemp
A Lane	M MacDonald
S McInness	M McLean
T McLean	D Milne
S Minshall	H Moylan
L Neve	M Nicholson
T O'Keeffe	L Peloza
J Perrin	M Portesi
A Quarrell	K Ramsay
J Reiher	M Rich
E Riggall	A G Robson
N Rodd	B Rodriguez
B Smith	H Smith
I Smith	J Smith
E Spry	S Taylor
P Teutenberg	B Thomson
J Thomson	K Thomson
D Webb	C Woods
D Ziebell	

# Our Supporters

## PRO-BONO ADVISERS

Heather Gray & Ben Grant	 <b>Hall &amp; Wilcox</b> smarter law	Andrew Lane & Cressida Staggard	
Hugo Brettingham-Moore		Maree Davidson	
Ms Frieda Yeo		Ms Glenda Morrison	

## CORPORATE SUPPORTERS

 <b>CITY OF MELBOURNE</b>	
	
	

## NON-CASH PARTNERSHIPS

		
---	---	---



# How You Can Help

## MAKE A ONE TIME DONATION

Your donation, no matter how large or small, will provide vulnerable women and children crucial breathing space to get their lives back on track.

Details on how you can donate can be found on our website

[www.queensfund.org.au/donate](http://www.queensfund.org.au/donate)

## DONATE THROUGH WORKPLACE GIVING

You can help change lives every payday. Workplace giving is an easy and tax-effective way to support The Queen's Fund. It also provides us with a steady, regular source of funds, enabling us to plan for the future.

## LEAVE A BEQUEST

Leaving a bequest to The Queen's Fund is a special way of leaving a lasting legacy with an organisation that has been around for 130 years. It also allows us to plan for the long-term future.

Please email [secretary@queensfund.org.au](mailto:secretary@queensfund.org.au) to organise a confidential discussion.

## BECOME A RECURRING DONOR

Your monthly donations provide a degree of certainty in our ability to provide assistance to women in need.

When you donate to The Queen's Fund online, simply tick the recurring donation box or set up a scheduled monthly transfer with your bank to:

**Account name:** The Queen's Fund

**BSB:** 063 – 019

**Account Number:** 1012 8344

## VOLUNTEER

The Queen's Fund has been run entirely by volunteers since 1887. You could help to make a difference to the lives of Victorian women in need by joining one of our subcommittees. We are looking for passionate enthusiastic volunteers with interests, skills or expertise in PR/marketing, governance, law, and community or welfare services.

Please email [secretary@queensfund.org.au](mailto:secretary@queensfund.org.au) with details of your skills, experience and availability.

The Queen's Fund is a Public Benevolent Institution (PBI) and is endorsed by the Australian Taxation Office as a Deductible Gift Recipient (DGR) with charity tax concessions. Our ABN is 33 355 436 160.

**This brochure has been printed on 100% post-consumer recycled paper.**





*Visit*

[queensfund.org.au](https://queensfund.org.au)